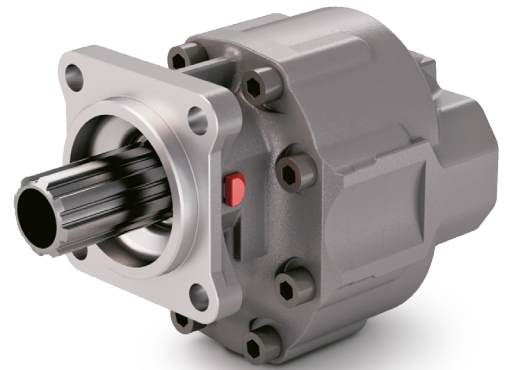
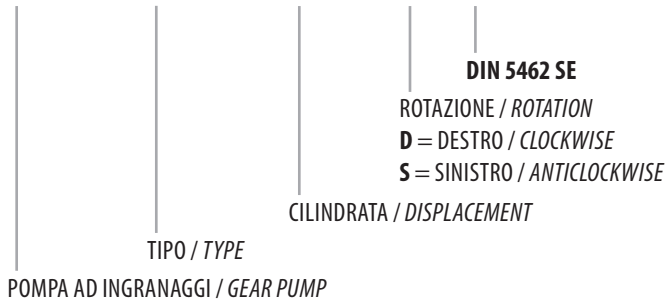


DIN 5462 SE

CODICE DI ORDINAZIONE / ORDERING CODE

200 FSL XXX X S

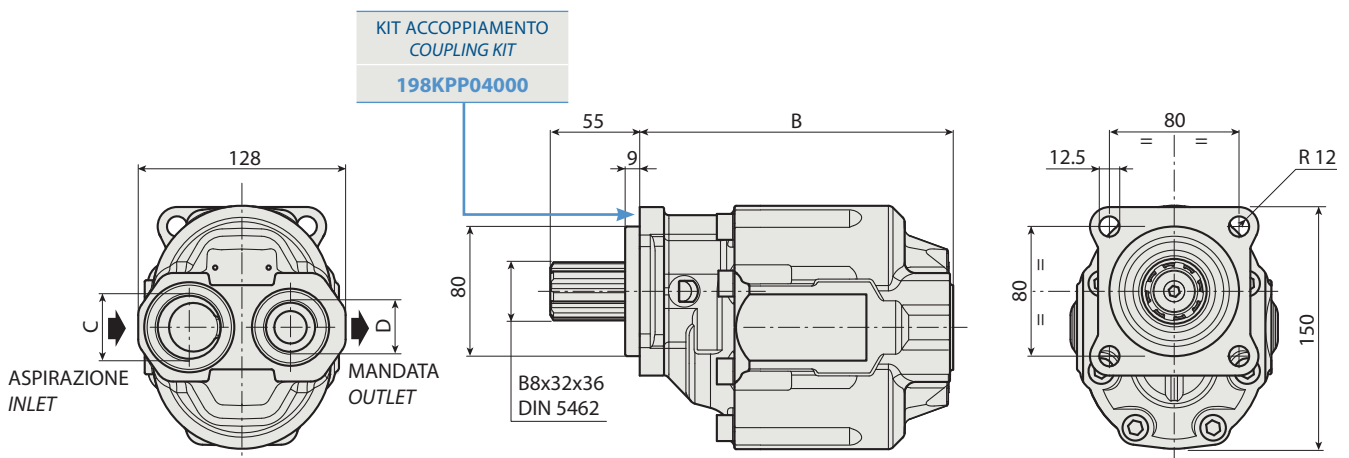


SCANIA

ALBERO USCITA NON SUPPORTATO
OUTPUT SHAFT NOT SUPPORTED



FSL 65



CARATTERISTICHE E DATI TECNICI / SPECIFICATIONS AND TECHNICAL DATA

| TIPO TYPE | CODICE / CODE | | CILINDRATA DISPLACEMENT cm ³ /rev. | B mm | C ASPIRAZIONE INLET | D MANDATA OUTLET | PESO WEIGHT kg |
|---------------|------------------------------------|--|---|--------------|---------------------------|------------------------|----------------------|
| | ROTAZIONE DESTRA CLOCKWISE ROT. | ROTAZIONE SINISTRA ANTICLOCKWISE ROT. | | | | | |
| FSL 65 | 200FSL065DS | 200FSL065SS | 65 | 178.5 | 1" G | 3/4" G | 12.6 |

KIT RASAMENTI / THRUST PLATES KIT CODICE / CODE 20601800000

KIT GUARNIZIONI COMPLETO / COMPLETE SEALS KIT CODICE / CODE 21901000000

Per la scelta dei raccordi orientabili vedi pag. 212-213 / For the selection of adjustable fittings see page 212-213

- A richiesta possono essere fornite le pompe ad ingranaggi con le guarnizioni HNBR per climi freddi (-40 °C).
- On request our gear pumps may be supplied with HNBR seals for cold climates (-40 °C).

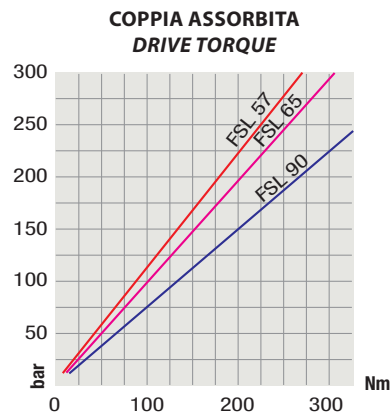
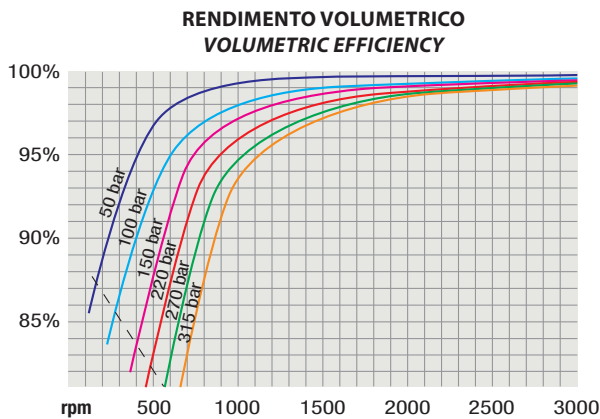
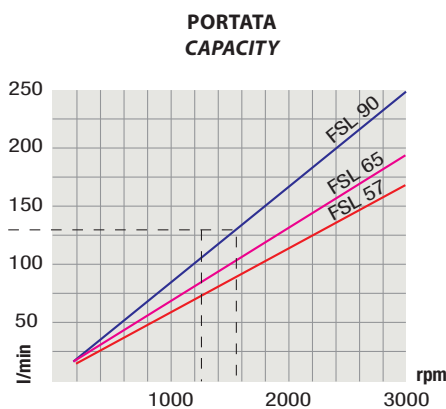
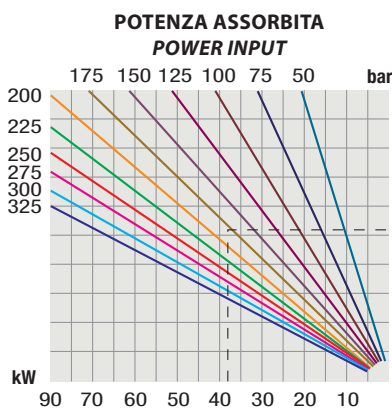
DIN 5462 SE

| TIPO / TYPE | | |
|---|-------------------------------|---|
| Cilindrata <i>Displacement</i> | Vg | cm ³ /n cm ³ /rev. |
| Pressione massima continua <i>Max continuous operating pressure</i> | P1 | bar |
| Pressione massima intermittente <i>Max intermittent operating pressure</i> | (max 30 s) P2 | |
| Pressione massima di picco <i>Max peak pressure</i> | (≤ 0.1 s) P3 | |
| Velocità massima intermittente <i>Max intermittent speed</i> | (P ≤ 20 bar) n3 | n/min r.p.m. |
| Velocità massima continua <i>Max continuous speed</i> | (≤ P1) | |
| Velocità minima intermittente <i>Min intermittent speed</i> | (≤ P2 x 0.5) (max 30 s) n4 | |

| FSL 65 |
|--------|
| 65 |
| 220 |
| 240 |
| 250 |
| 3500 |
| 1800 |
| 300 |

1

DIAGRAMMI / DIAGRAMS



RILIEVI ESEGUITI CON OLIO ISO VG 46 A 50° C ($\nu = 30$ cSt)
THE ABOVE SPECIFICATIONS REFER TO OIL TYPE ISO VG 46 AT 50° C ($\nu = 30$ cSt)