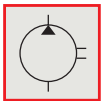
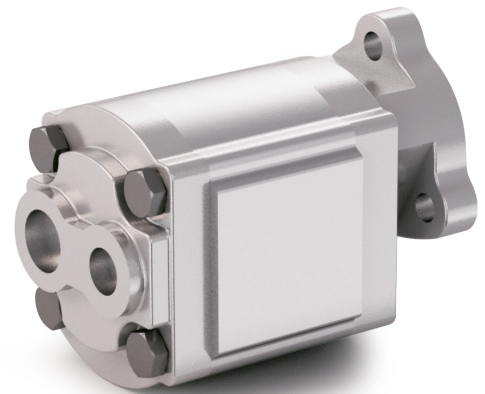
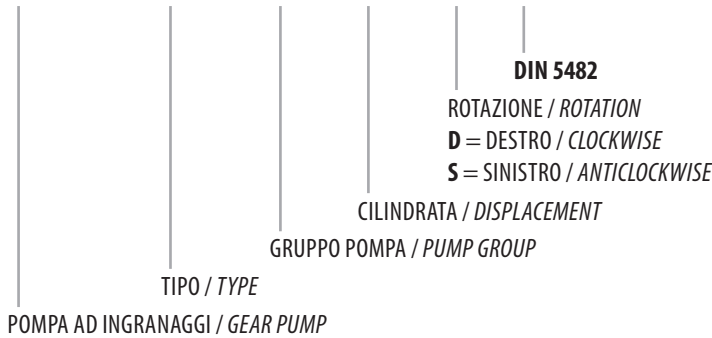


DIN 5482

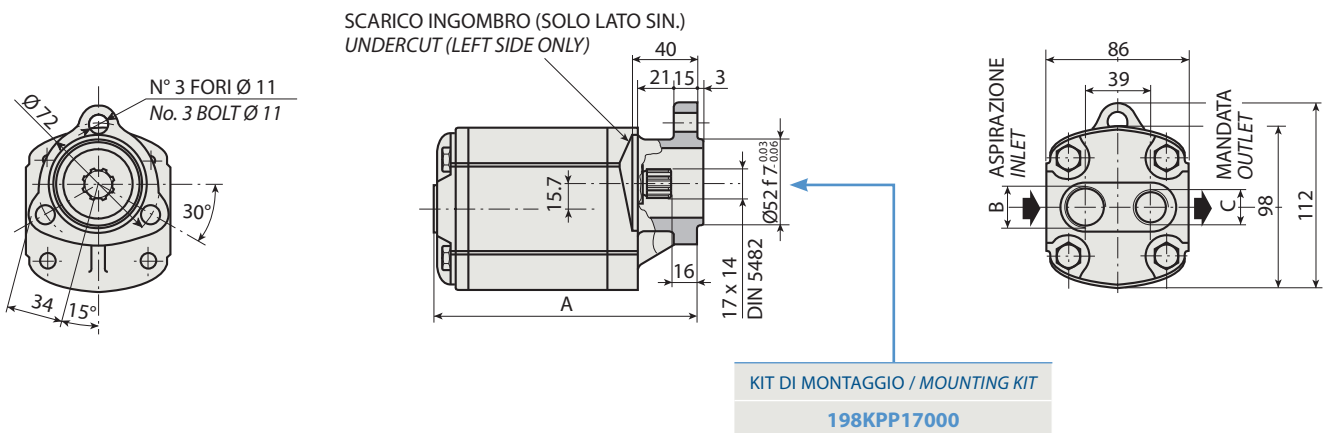
CODICE DI ORDINAZIONE / ORDERING CODE

200 DAB 2 XX X 0



1

DAB 15



CARATTERISTICHE E DATI TECNICI / SPECIFICATIONS AND TECHNICAL DATA

| TIPO TYPE | CODICE / CODE | | CILINDRATA DISPLACEMENT cm ³ /rev. | A mm | B ASPIRAZIONE INLET | C MANDATA OUTLET | PESO WEIGHT kg |
|---------------|------------------------------------|--|---|---------|---------------------------|------------------------|----------------------|
| | ROTAZIONE DESTRA CLOCKWISE ROT. | ROTAZIONE SINISTRA ANTICLOCKWISE ROT. | | | | | |
| DAB 15 | 200DAB215D0 | 200DAB215S0 | 15 | 148 | 3/4" G | 1/2" G | 3.0 |

KIT RASAMENTI / THRUST PLATES KIT CODICE / CODE 20602300000

KIT GUARNIZIONI COMPLETO / COMPLETE SEALS KIT CODICE / CODE 21902500000

Per la scelta dei raccordi orientabili vedi pag. 212-213 / For the selection of adjustable fittings see page 212-213

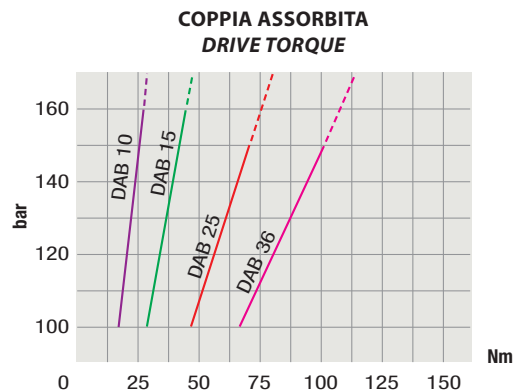
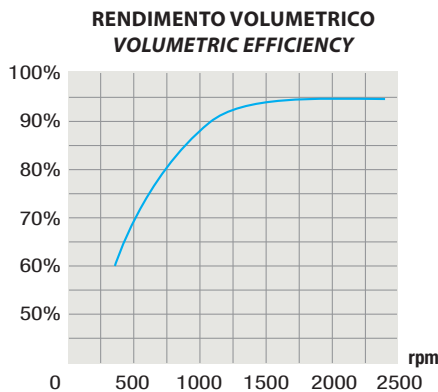
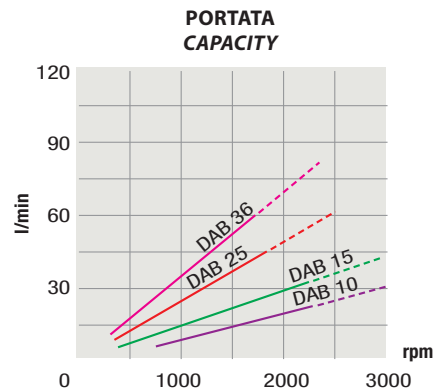
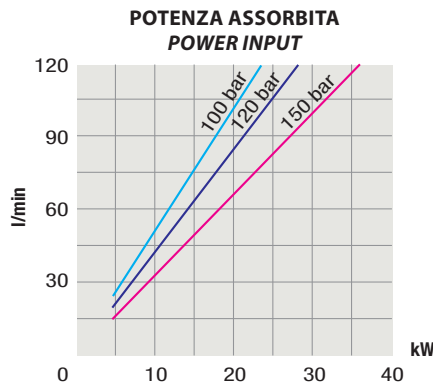
- A richiesta possono essere fornite le pompe ad ingranaggi con le guarnizioni HNBR per climi freddi (-40 °C).
- On request our gear pumps may be supplied with HNBR seals for cold climates (-40 °C).

| TIPO / TYPE | | |
|---|----|---|
| Cilindrata <i>Displacement</i> | Vg | cm ³ /n cm ³ /rev. |
| Pressione massima continua <i>Max continuous operating pressure</i> | P1 | bar |
| Pressione massima intermittente <i>Max intermittent operating pressure</i> (max 30 s) | P2 | |
| Pressione massima di picco <i>Max peak pressure</i> (≤ 0.1 s) | P3 | |
| Velocità massima intermittente <i>Max intermittent speed</i> (P ≤ 20 bar) | n3 | n/min r.p.m. |
| Velocità massima continua <i>Max continuous speed</i> (≤ P1) | n1 | |
| Velocità minima intermittente <i>Min intermittent speed</i> (≤ P2 x 0.5) (max 30 s) | n4 | |

| DAB 15 | |
|--------|------|
| | 15 |
| | 140 |
| | 160 |
| | 210 |
| | 3000 |
| | 1500 |
| | 650 |

1

DIAGRAMMI / DIAGRAMS



RILIEVI ESEGUITI CON OLIO ISO VG 46 A 50° C ($\nu = 30$ cSt)
THE ABOVE SPECIFICATIONS REFER TO OIL TYPE ISO VG 46 AT 50° C ($\nu = 30$ cSt)