

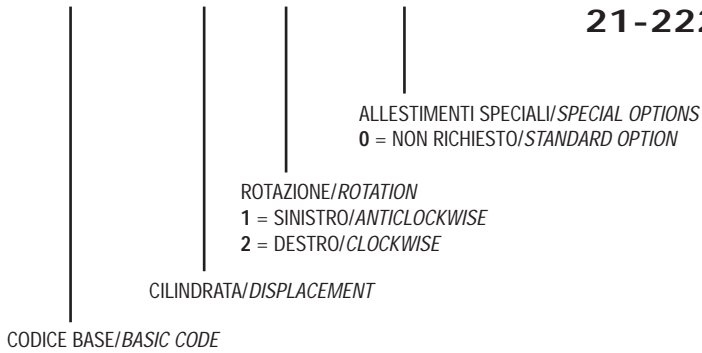
# SERIE XP

# 3.1.2.4.

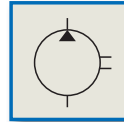
**UNI**  
21-222 XP 100

CODICE DI ORDINAZIONE / DECODING

3.1.2.4 . XXX . X . 0 . 0 . 0



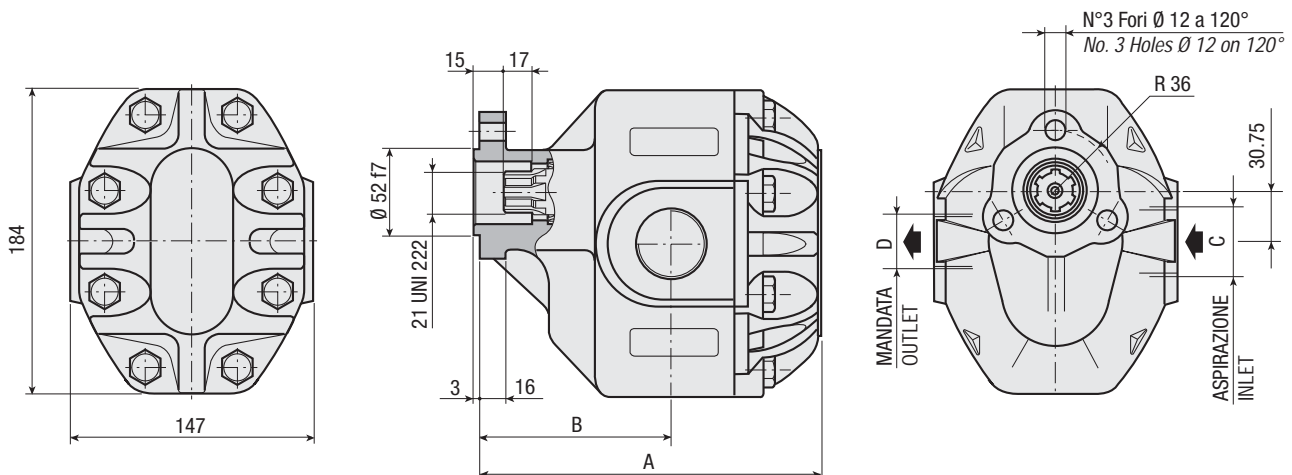
## Pompa ad Ingranaggi Gear Pump



### CARATTERISTICHE E DATI TECNICI / SPECIFICATIONS AND TECHNICAL DATA

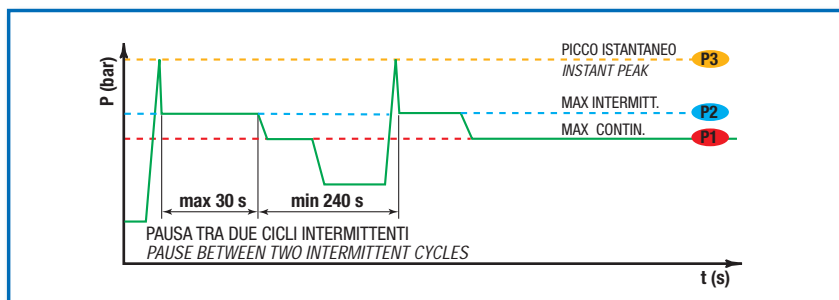
TIPO TYPE	CODICE CODE	CILINDRATA DISPLACEMENT cm <sup>3</sup> /rev.	A mm	B mm	C ASPIRAZIONE INLET	D MANDATA OUTLET	PESO WEIGHT kg
--------------	----------------	---	---------	---------	---------------------------	------------------------	----------------------

XP 100	3.1.2.4.100.X.0.0.0	100	200	111	1" ¼ G	1" G	18.8
--------	---------------------	-----	-----	-----	--------	------	------



**DATI TECNICI / TECHNICAL DATA**

**ESEMPIO CICLI LAVORO / EXAMPLE OF WORKING CYCLES**



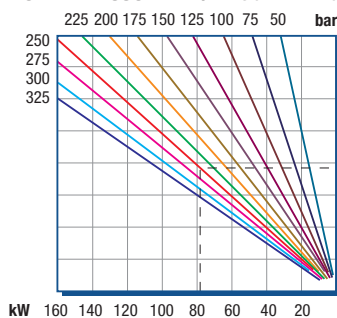
Pressione d'aspirazione: Inlet pressure:	0.7 ÷ 1.5 bar (assoluti/absolute)
Campo viscosità lavoro: Operating viscosity range:	12 ÷ 100 cSt
Temperatura fluido °C (t): Fluid temperature °C (t):	-10° + 80° C

Pressione Lavoro Working Press. P2	Contaminazione / Contamination		Filtro / Filter βx = 75
	NAS 1638	ISO 4406	
≤ 200 bar	12	21/18	40 μm
≥ 200 bar	11	20/17	25 μm

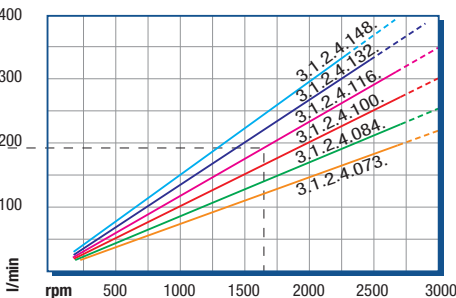
◀ **FILTRAZIONE CONSIGLIATA (ritorno o mandata)**  
**RECOMMENDED FILTERING (return or outlet)**

TIPO / TYPE					XP 100			
Cilindrata Displacement	Vg	cm <sup>3</sup> /n cm <sup>3</sup> /rev.			100			
Pressione massima continua Max continuous operating pressure	P1	bar			260			
Pressione massima intermittente Max intermitt. operating pressure (max 30 s)	P2				290			
Pressione massima di picco Max peak pressure (≤ 0.1 s)	P3				375			
Velocità massima intermittente Max intermittent speed (P ≤ 20 bar)	n3	n/min r.p.m.			3500			
Velocità massima continua Max continuous speed (≤ P1)	n1				2700			
Velocità minima intermittente Min intermittent speed (≤ P2 x 0.5) (max 30 s)	n4				300			

**POTENZA ASSORBITA / ABSORBED POWER**



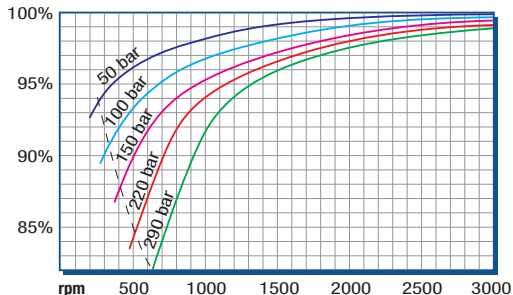
**PORTATA / CAPACITY**



RILIEVI ESEGUITI CON OLIO  
 ISO VG 46 A 50° C (ν=30 cSt)  
 THE ABOVE SPECIFICATIONS  
 REFER TO OIL TYPE ISO  
 VG 46 AT 50° C (ν=30 cSt)

**DIAGRAMMI / DIAGRAMS**

**RENDIMENTO VOLUMETRICO / VOLUMETRIC EFFICIENCY**



**COPPIA ASSORBITA / INPUT TORQUE**

