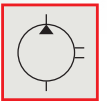
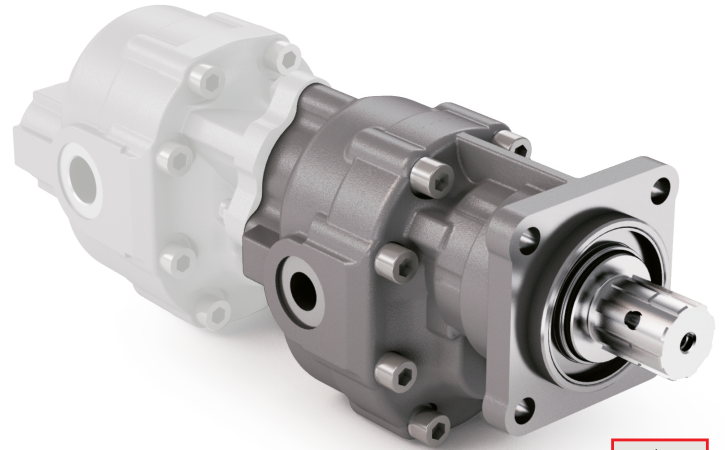


TANDEM DIN 5462 SE

CODICE DI ORDINAZIONE / ORDERING CODE

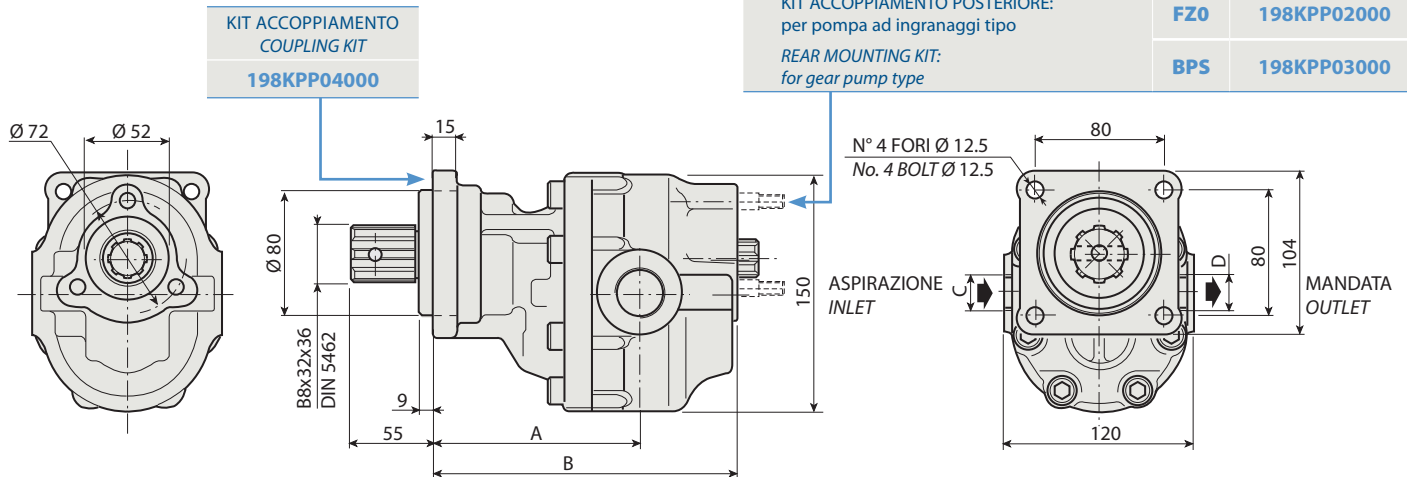
200 FZO XXX X V

DIN 5462 SE
 ROTAZIONE / ROTATION
D = DESTRO / CLOCKWISE
S = SINISTRO / ANTICLOCKWISE
 CILINDRATA / DISPLACEMENT
 TIPO / TYPE
 POMPA AD INGRANAGGI / GEAR PUMP



1

FZO 27 V



CARATTERISTICHE E DATI TECNICI / SPECIFICATIONS AND TECHNICAL DATA

TIPO TYPE	CODICE / CODE		CILINDRATA DISPLACEMENT cm ³ /rev.	A mm	B mm	C ASPIRAZIONE INLET	D MANDATA OUTLET	PESO WEIGHT kg
	ROTAZIONE DESTRA CLOCKWISE ROT.	ROTAZIONE SINISTRA ANTICLOCKWISE ROT.						
FZO 27 V	200FZ0027DV	200FZ0027SV	27	125	180	3/4" G	1/2" G	11.5

KIT RASAMENTI / THRUST PLATES KIT CODICE / CODE 20601800000

KIT GUARNIZIONI COMPLETO / COMPLETE SEALS KIT CODICE / CODE 21902200000

Per la scelta dei raccordi orientabili vedi pag. 212-213 / For the selection of adjustable fittings see page 212-213

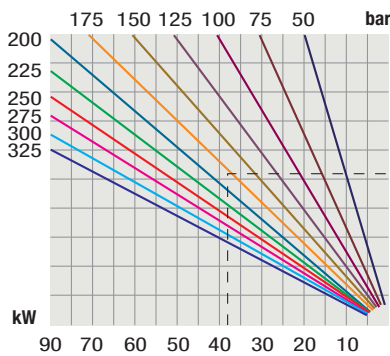
- A richiesta possono essere fornite le pompe ad ingranaggi con le guarnizioni HNBR per climi freddi (-40 °C).
- On request our gear pumps may be supplied with HNBR seals for cold climates (-40 °C).

TANDEM DIN 5462 SE

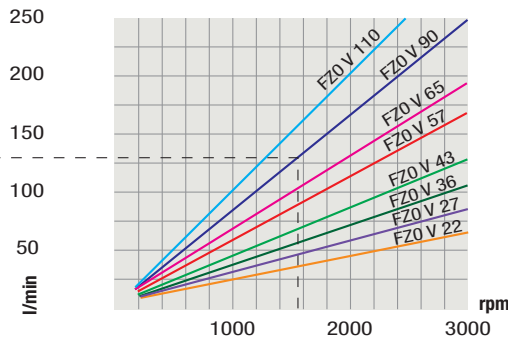
TIPO / TYPE		FZO 27 V	
Cilindrata Displacement	Vg cm ³ /n cm ³ /rev.	27	
Pressione massima continua Max continuous operating pressure	P1	300	
Pressione massima intermittente Max intermittent operating pressure (max 30 s)	P2	325	
Pressione massima di picco Max peak pressure (≤ 0.1 s)	P3	450	
Velocità massima intermittente Max intermittent speed (P ≤ 20 bar)	n3	3500	
Velocità massima continua Max continuous speed (≤ P1)	n1	2200	n/min r.p.m.
Velocità minima intermittente Min intermittent speed (≤ P2 x 0.5) (max 30 s)	n4	350	

DIAGRAMMI / DIAGRAMS

POTENZA ASSORBITA
POWER INPUT

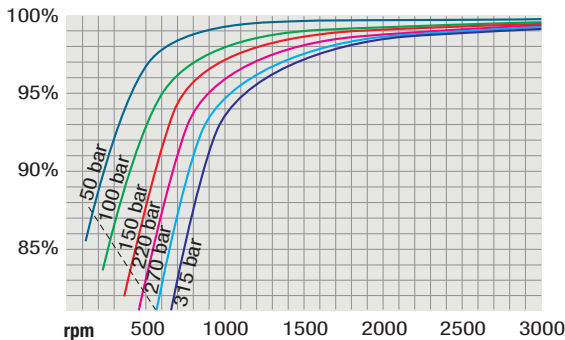


PORTATA
CAPACITY

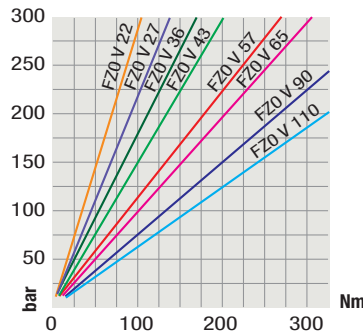


RILIEVI ESEGUITI CON OLIO ISO VG 46
A 50° C ($\nu = 30$ cSt)
THE ABOVE SPECIFICATIONS REFER TO OIL
TYPE ISO VG 46 AT 50° C ($\nu = 30$ cSt)

RENDIMENTO VOLUMETRICO
VOLUMETRIC EFFICIENCY



COPPIA ASSORBITA
DRIVE TORQUE



Verificare, nel caso vi sia l'utilizzo contemporaneo delle due pompe, che la coppia sull'albero in uscita non superi i 270 Nm.
In case of simultaneous use of both pumps, make sure that the torque on output shaft does not exceed 270 Nm.