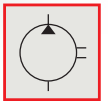
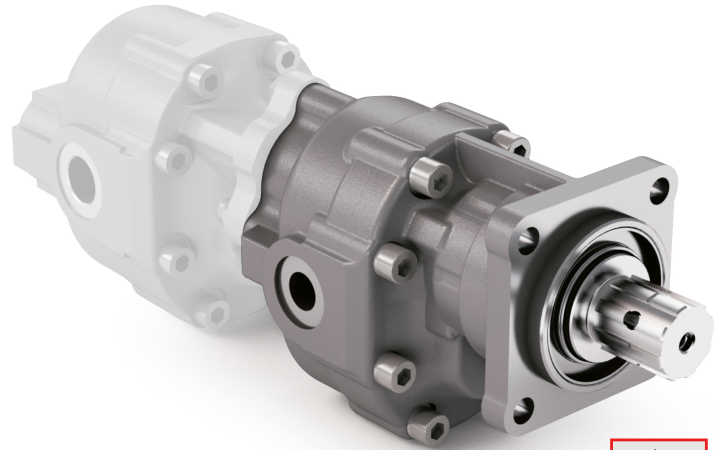


## TANDEM DIN 5462 SE

CODICE DI ORDINAZIONE / ORDERING CODE

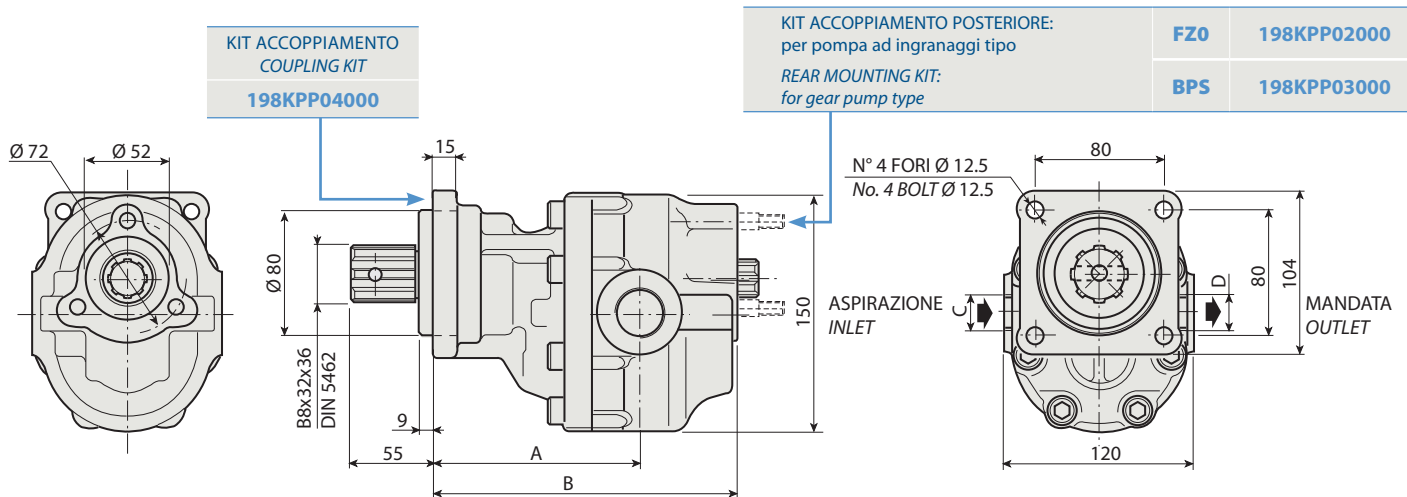
### 200 FZ0 XXX X V

**DIN 5462 SE**  
 ROTAZIONE / ROTATION  
**D** = DESTRO / CLOCKWISE  
**S** = SINISTRO / ANTICLOCKWISE  
 CILINDRATA / DISPLACEMENT  
 TIPO / TYPE  
 POMPA AD INGRANAGGI / GEAR PUMP



**FZ0 57 V**

1



### CARATTERISTICHE E DATI TECNICI / SPECIFICATIONS AND TECHNICAL DATA

TIPO TYPE	CODICE / CODE		CILINDRATA DISPLACEMENT cm <sup>3</sup> /rev.	A mm	B mm	C ASPIRAZIONE INLET	D MANDATA OUTLET	PESO WEIGHT kg
	ROTAZIONE DESTRA CLOCKWISE ROT.	ROTAZIONE SINISTRA ANTICLOCKWISE ROT.						

<b>FZ0 57 V</b>	<b>200FZ0057DV</b>	<b>200FZ0057SV</b>	<b>57</b>	<b>138</b>	<b>201.5</b>	<b>1" G</b>	<b>3/4" G</b>	<b>13.4</b>
-----------------	--------------------	--------------------	-----------	------------	--------------	-------------	---------------	-------------

KIT RASAMENTI / THRUST PLATES KIT CODICE / CODE 20601800000

KIT GUARNIZIONI COMPLETO / COMPLETE SEALS KIT CODICE / CODE 21902200000

Per la scelta dei raccordi orientabili vedi pag. 212-213 / For the selection of adjustable fittings see page 212-213

- A richiesta possono essere fornite le pompe ad ingranaggi con le guarnizioni HNBR per climi freddi (-40 °C).
- On request our gear pumps may be supplied with HNBR seals for cold climates (-40 °C).

## TANDEM DIN 5462 SE

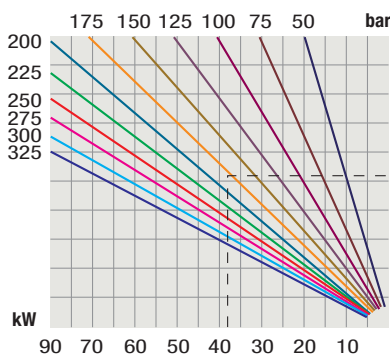
TIPO / TYPE			
Cilindrata <i>Displacement</i>	Vg	cm <sup>3</sup> /n cm <sup>3</sup> /rev.	
Pressione massima continua <i>Max continuous operating pressure</i>	P1		
Pressione massima intermittente (max 30 s) <i>Max intermittent operating pressure</i>	P2	bar	
Pressione massima di picco (≤ 0.1 s) <i>Max peak pressure</i>	P3		
Velocità massima intermittente (P ≤ 20 bar) <i>Max intermittent speed</i>	n3		
Velocità massima continua (≤ P1) <i>Max continuous speed</i>	n1	n/min r.p.m.	
Velocità minima intermittente (≤ P2 x 0.5) (max 30 s) <i>Min intermittent speed</i>	n4		

### FZO 57 V

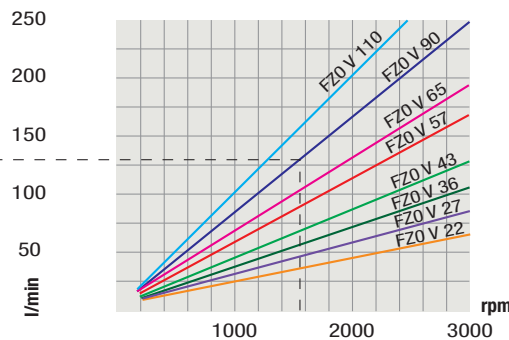
57
240
265
380
3500
2000
300

### DIAGRAMMI / DIAGRAMS

POTENZA ASSORBITA  
POWER INPUT



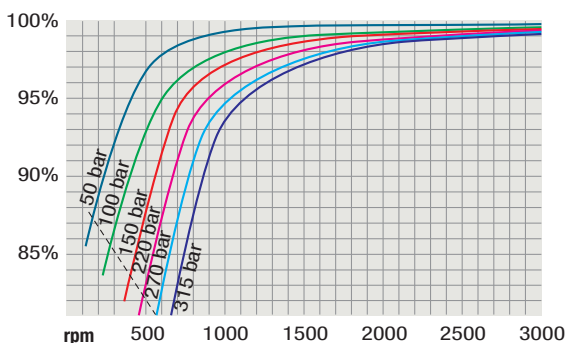
PORTATA  
CAPACITY



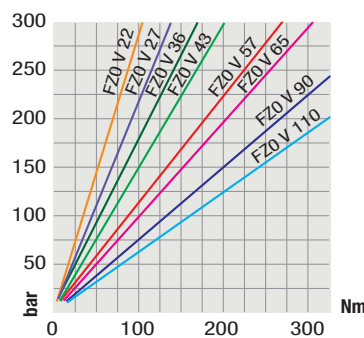
RILIEVI ESEGUITI CON OLIO ISO VG 46  
A 50° C ( $\nu = 30$  cSt)

THE ABOVE SPECIFICATIONS REFER TO OIL  
TYPE ISO VG 46 AT 50° C ( $\nu = 30$  cSt)

RENDIMENTO VOLUMETRICO  
VOLUMETRIC EFFICIENCY



COPPIA ASSORBITA  
DRIVE TORQUE



Verificare, nel caso vi sia l'utilizzo contemporaneo delle due pompe, che la coppia sull'albero in uscita non superi i 270 Nm.

In case of simultaneous use of both pumps, make sure that the torque on output shaft does not exceed 270 Nm.