

TANDEM DIN 5462 SE

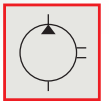
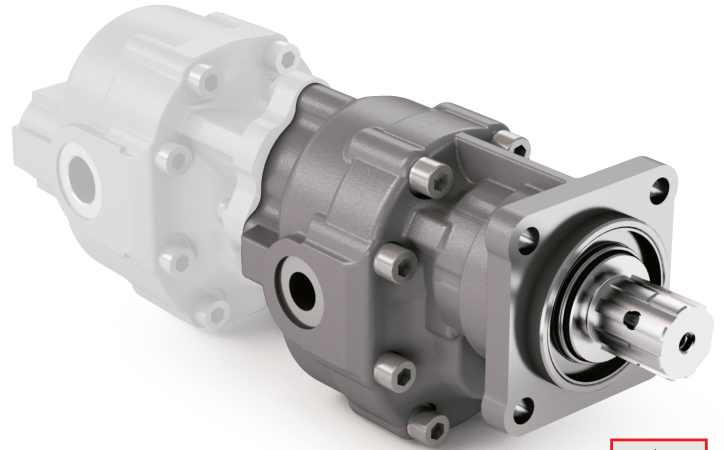
CODICE DI ORDINAZIONE / ORDERING CODE

200 FZO XXX X V

TIPO / TYPE
POMPA AD INGRANAGGI / GEAR PUMP

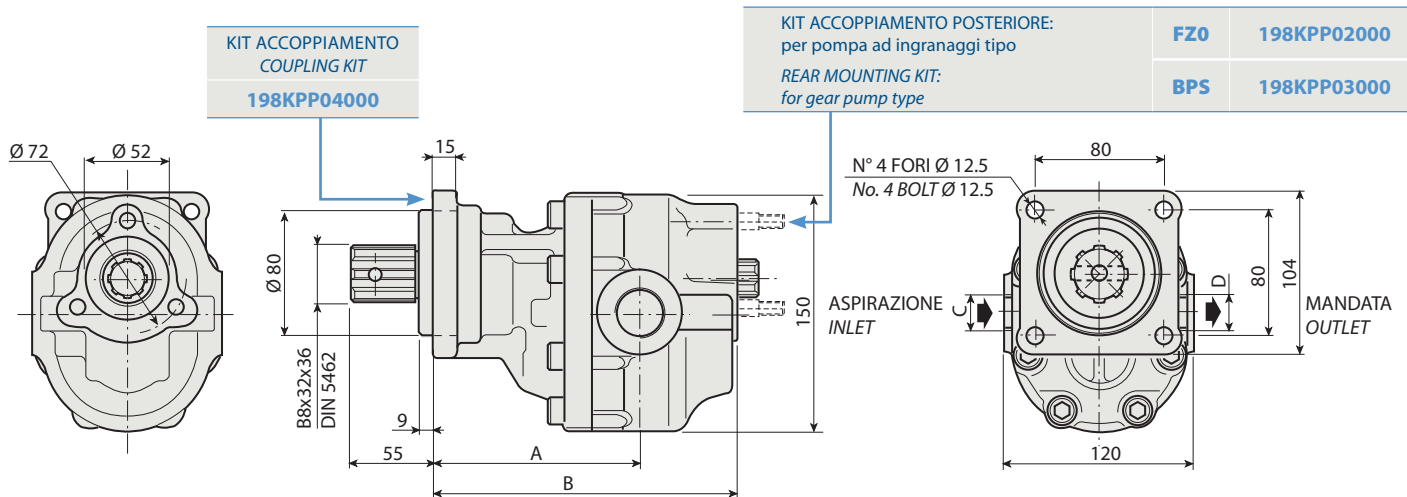
CILINDRATA / DISPLACEMENT

DIN 5462 SE
ROTAZIONE / ROTATION
D = DESTRO / CLOCKWISE
S = SINISTRO / ANTICLOCKWISE



FZO 90 V

1



CARATTERISTICHE E DATI TECNICI / SPECIFICATIONS AND TECHNICAL DATA

TIPO / TYPE	CODICE / CODE		CILINDRATA / DISPLACEMENT	A	B	C	D	PESO / WEIGHT
	ROTAZIONE DESTRA / CLOCKWISE ROT.	ROTAZIONE SINISTRA / ANTICLOCKWISE ROT.	cm ³ /rev.	mm	mm	ASPIRAZIONE / INLET	MANDATA / OUTLET	kg

FZO 90 V	200FZ0090DV	200FZ0090SV	84	152.5	221.5	1" 1/4 G	1" G	14.9
-----------------	--------------------	--------------------	-----------	--------------	--------------	-----------------	-------------	-------------

KIT RASAMENTI / THRUST PLATES KIT CODICE / CODE 20601800000

KIT GUARNIZIONI COMPLETO / COMPLETE SEALS KIT CODICE / CODE 21902200000

Per la scelta dei raccordi orientabili vedi pag. 212-213 / For the selection of adjustable fittings see page 212-213

- A richiesta possono essere fornite le pompe ad ingranaggi con le guarnizioni HNBR per climi freddi (-40 °C).
- On request our gear pumps may be supplied with HNBR seals for cold climates (-40 °C).

TANDEM DIN 5462 SE

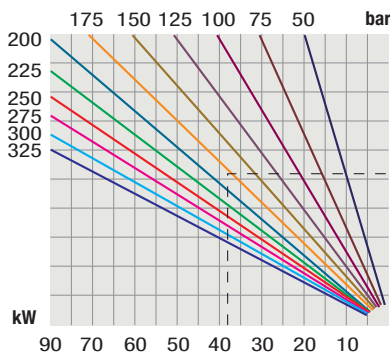
TIPO / TYPE			
Cilindrata <i>Displacement</i>	Vg	cm ³ /n cm ³ /rev.	
Pressione massima continua <i>Max continuous operating pressure</i>	P1	bar	
Pressione massima intermittente (max 30 s) <i>Max intermittent operating pressure</i>	P2		
Pressione massima di picco (≤ 0.1 s) <i>Max peak pressure</i>	P3		
Velocità massima intermittente <i>Max intermittent speed</i>	(P ≤ 20 bar)	n3	
Velocità massima continua <i>Max continuous speed</i>	(≤ P1)	n1	n/min r.p.m.
Velocità minima intermittente <i>Min intermittent speed</i>	(≤ P2 x 0.5) (max 30 s)	n4	

FZO 90 V

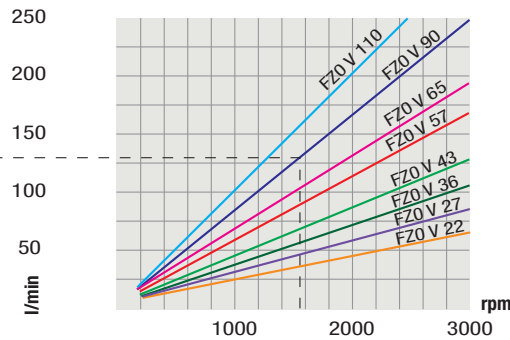
84
210
230
300
3500
1500
300

DIAGRAMMI / DIAG

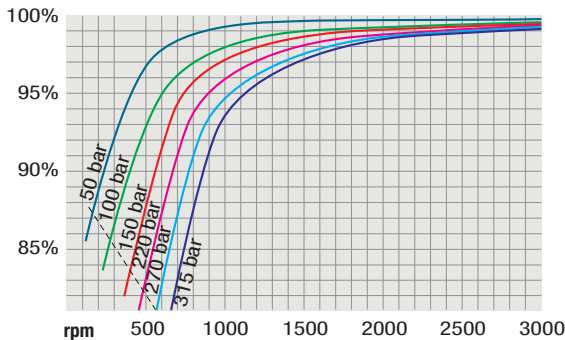
POTENZA ASSORBITA
POWER INPUT



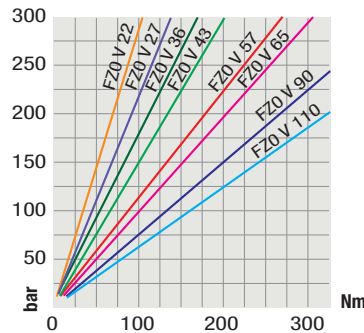
PORTATA
CAPACITY



RENDIMENTO VOLUMETRICO
VOLUMETRIC EFFICIENCY



COPPIA ASSORBITA
DRIVE TORQUE



RILIEVI ESEGUITI CON OLIO ISO VG 46
A 50° C ($\nu = 30$ cSt)

THE ABOVE SPECIFICATIONS REFER TO OIL
TYPE ISO VG 46 AT 50° C ($\nu = 30$ cSt)



Verificare, nel caso vi sia l'utilizzo contemporaneo delle due pompe, che la coppia sull'albero in uscita non superi i 270 Nm.

In case of simultaneous use of both pumps, make sure that the torque on output shaft does not exceed 270 Nm.